

Hand Signals For Stage

Pointing to your ear means “My Monitor’s Overall Level”.



To signal for more monitor level for any particular vocalist or instrument on stage, point to your ear, then to the person or instrument with your index finger while pointing your thumb upward.

Optionally, you may leave out pointing to your ear but be sure the monitor man is OK with that..



Thumbs up means “More overall volume on my monitor”.



To signal for more monitor level for any particular vocalist or instrument on stage, point to your ear, then to the person or instrument with your index finger while pointing your thumb downward.

Optionally, you may leave out pointing to your ear but be sure the monitor man is OK with that..



Thumbs down means “Less overall volume on my monitor”.



Stop. That’s good.



Everything is fine.



If you know what monitor channel you (or anyone else) is plugged into, you can signal by flashing that number of fingers and the motion for volume up or volume down. For example, flashing 3 fingers and the motion up or down. This really only works for channels 1 through 5.

If you need to signal for channels larger than 5 you should set it up with the monitor mix person beforehand.

For example, five fingers followed immediately by 1 finger means Channel 6.



When you reach channel 10, it can get confusing.

Signaling 5 twice could mean 10 or it could mean Channel 5, Stop!



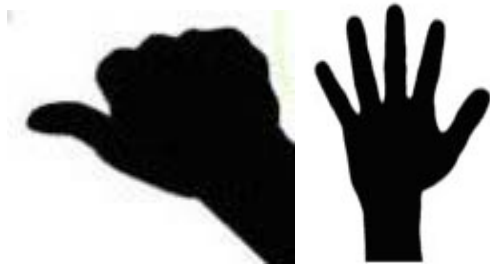
To avoid confusion, use your thumb to mean 10. Make a fist (palm towards the ground) and point your thumb parallel to the ground.



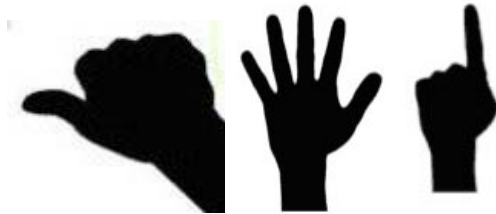
So, this means Channel 11.



This means Channel 15.



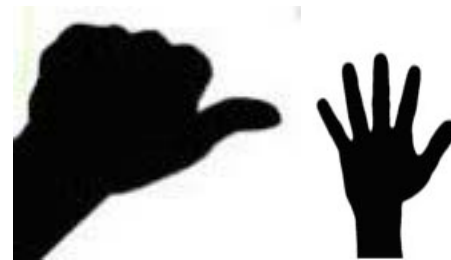
Channel 16?



What about channel 20 and over?
Make a fist with your palm facing up,
and your thumb parallel to the ground.



Channel 25



So...

Using either hand, a fist with thumb pointing in towards your body (palm down) means 10.

A fist with thumb pointing out from your body (palm up) means 20.